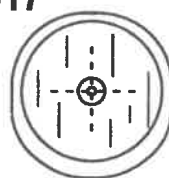
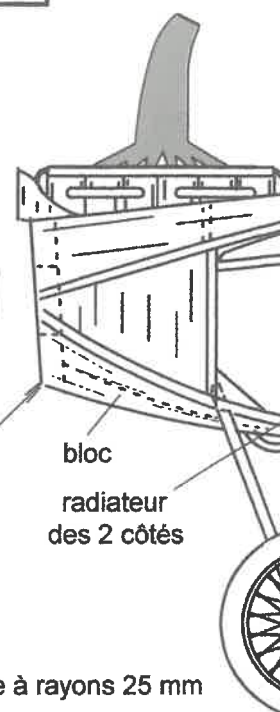
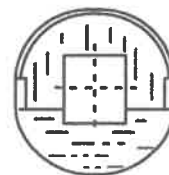


# National FlugzeugWerke NFW E. II

Un prototype allemand de 1917



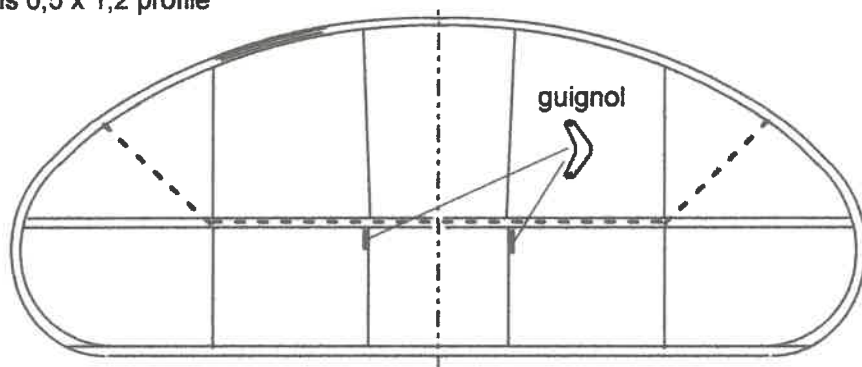
piqueur 4 à 6°  
droite 2 à 4°



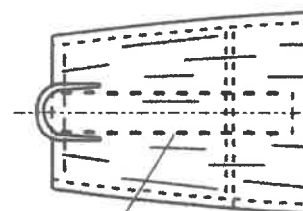
bloc  
radiateur  
des 2 côtés

roue à rayons 25 mm

3 fois 0,5 x 1,2 profilé

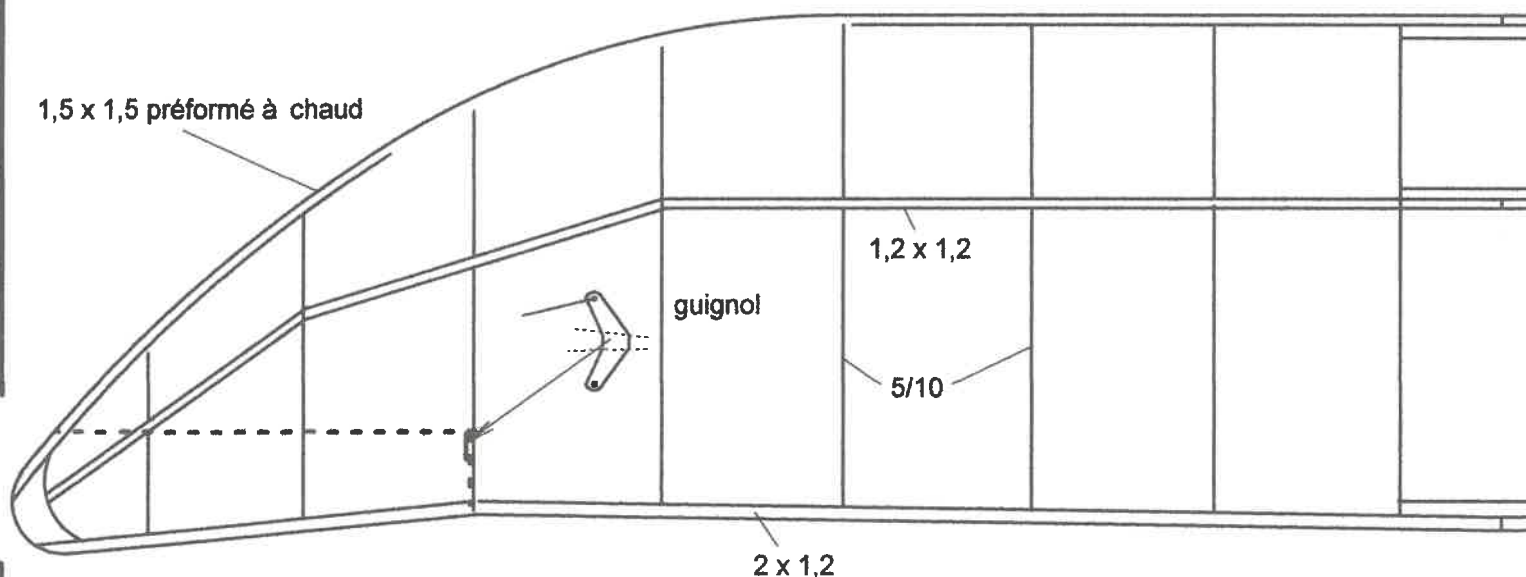


guignol



faux moteur

1,5 x 1,5 préformé à chaud

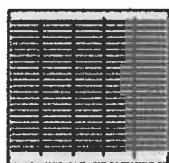
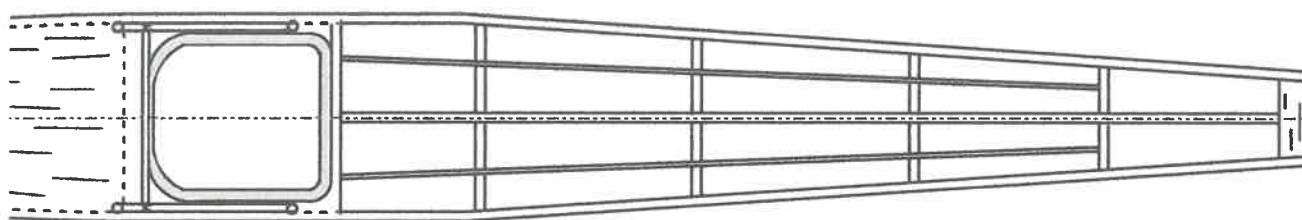
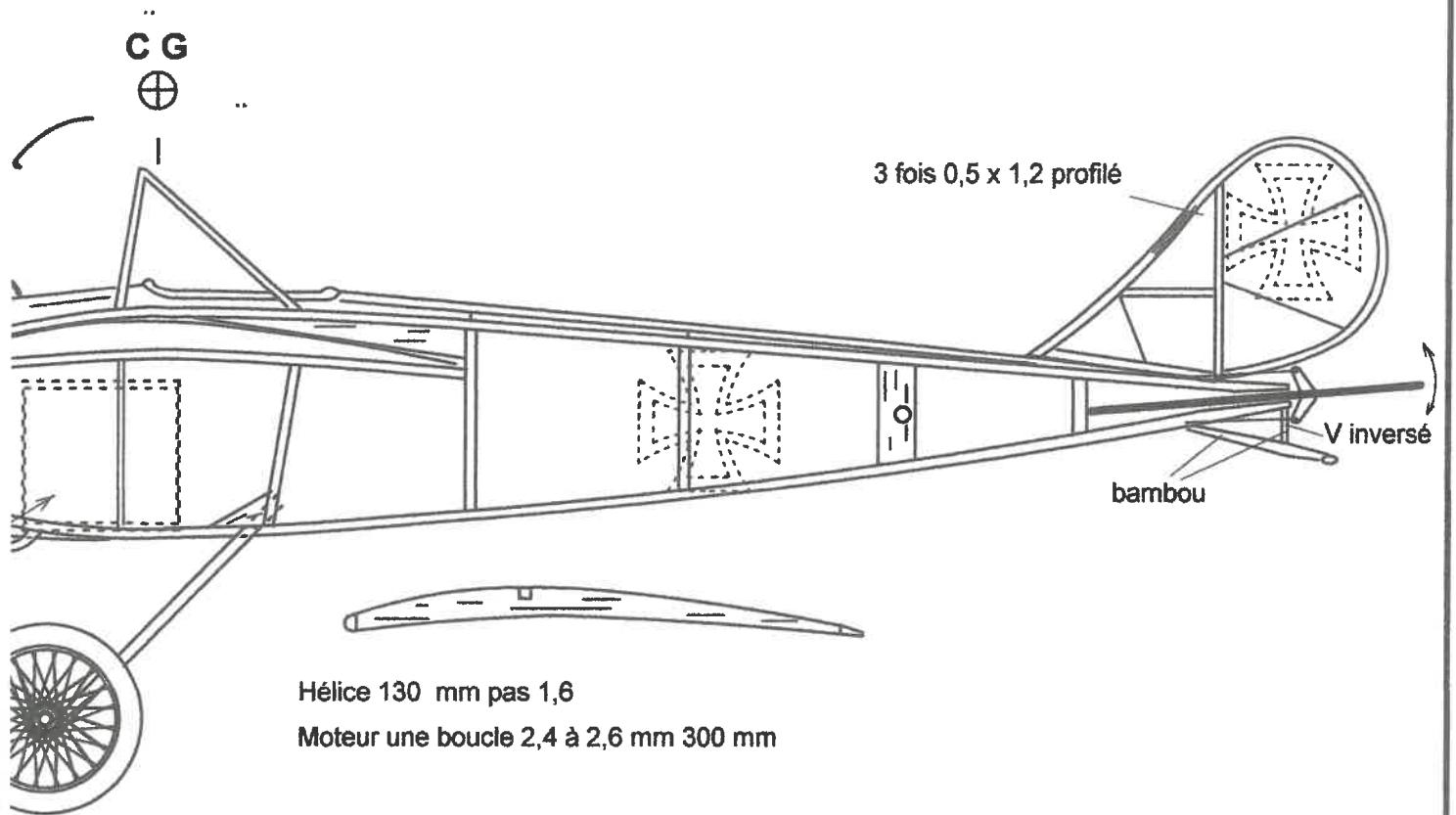


guignol

1,2 x 1,2

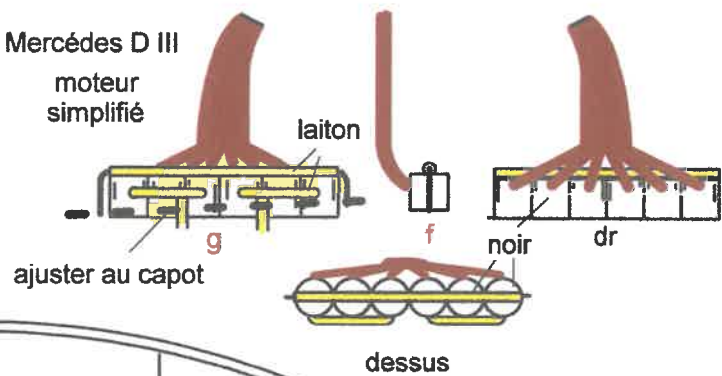
5/10

2 x 1,2



radiateur

Mercédès D III  
moteur  
simplifié



Aile avec  
aileron  
optionnelle

