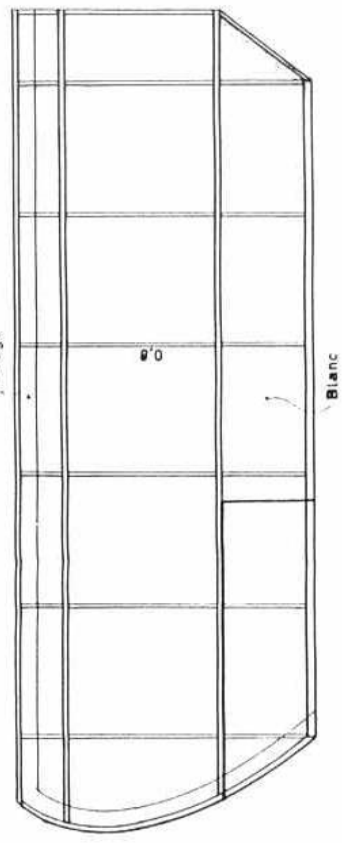


Rouge



Rouge



Blanc

Dièdre: 10 mm

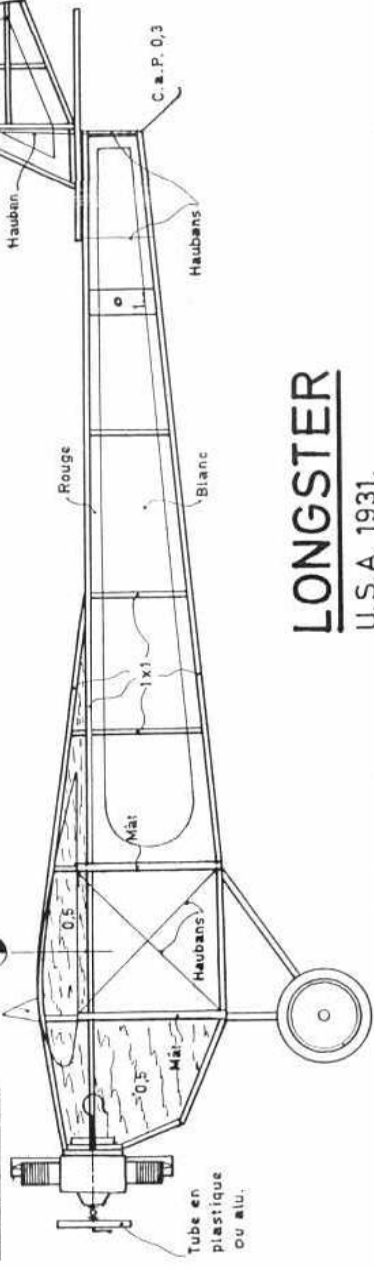


0.8

Pare-brise

C.G.

Moteur ANZANI 35 H.P.



ENTOILAGE

AILE STABILISCOPE
DERIVE
FUSELAGE Papier Japon blanc.

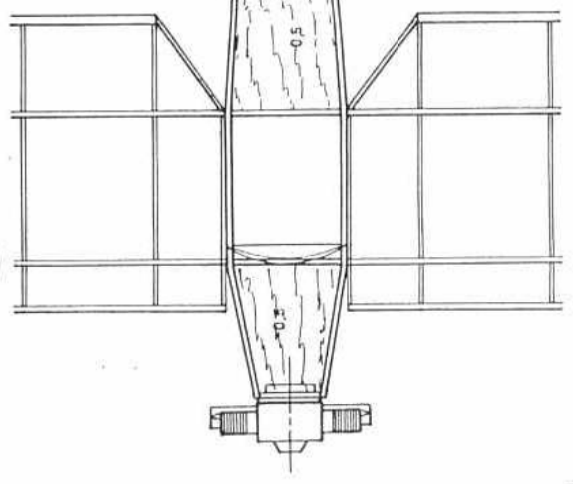
DÉCORATION

Blanc et Rouge

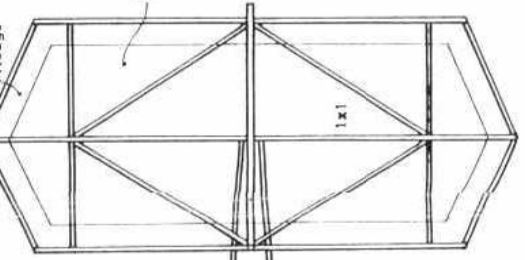
LONGSTER

U.S.A. 1931.

UN "CACAHUETE" DE
F.L. VAN HAUWAERT.

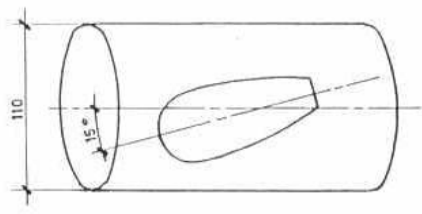
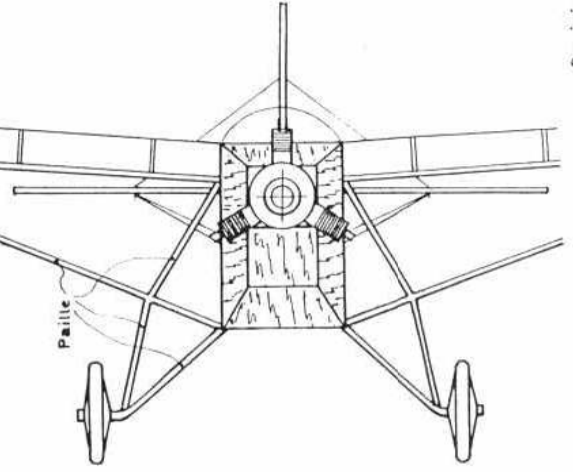


Rouge



Blanc

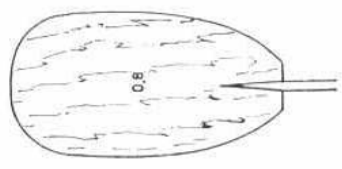
Paille



110

15°

Pale d'hélice moulée sur un cylindre Ø 110 mm.



0.8

Hélice Ø 120 mm

MOTEUR

2 brins 1 x 1.6.
Longueur 290 mm.