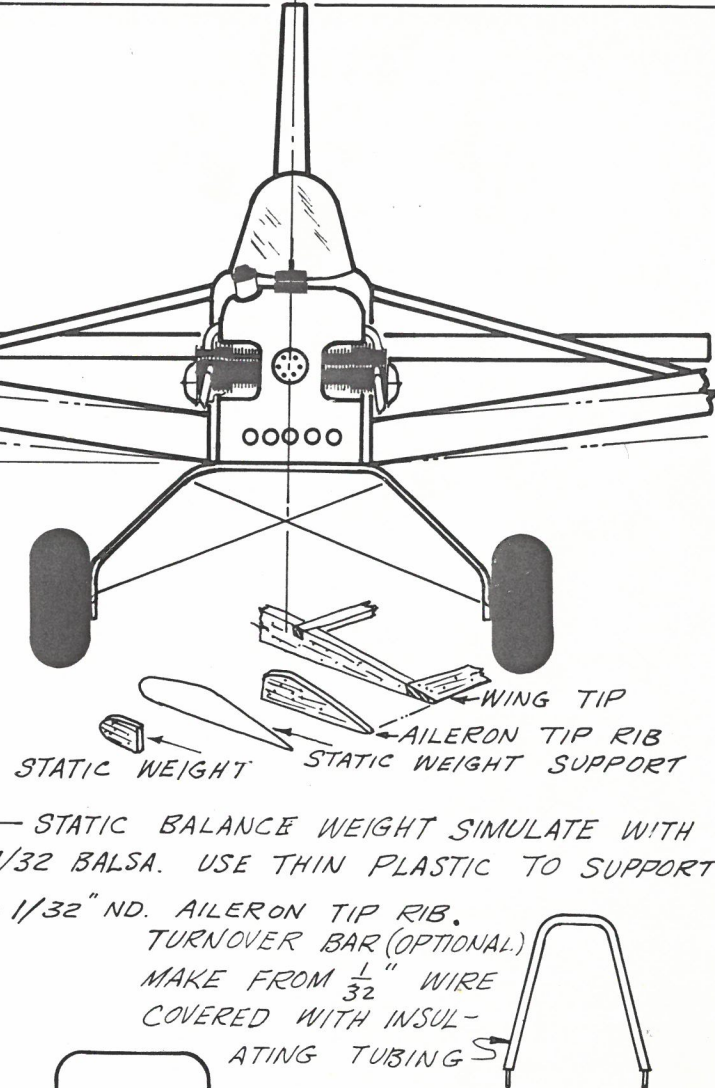
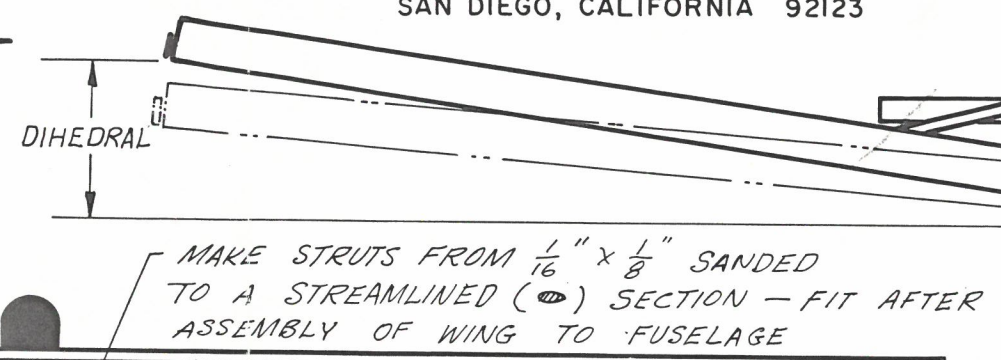
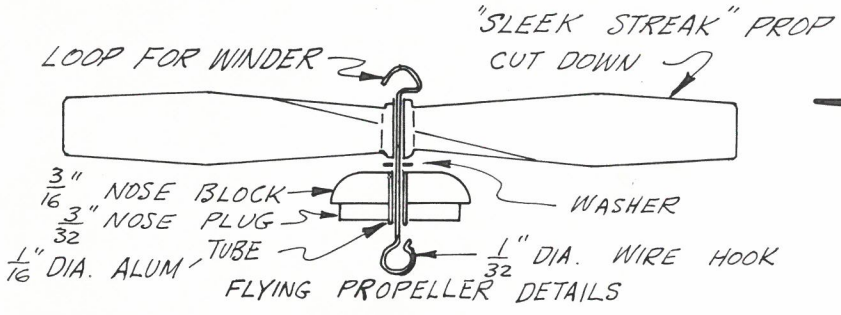
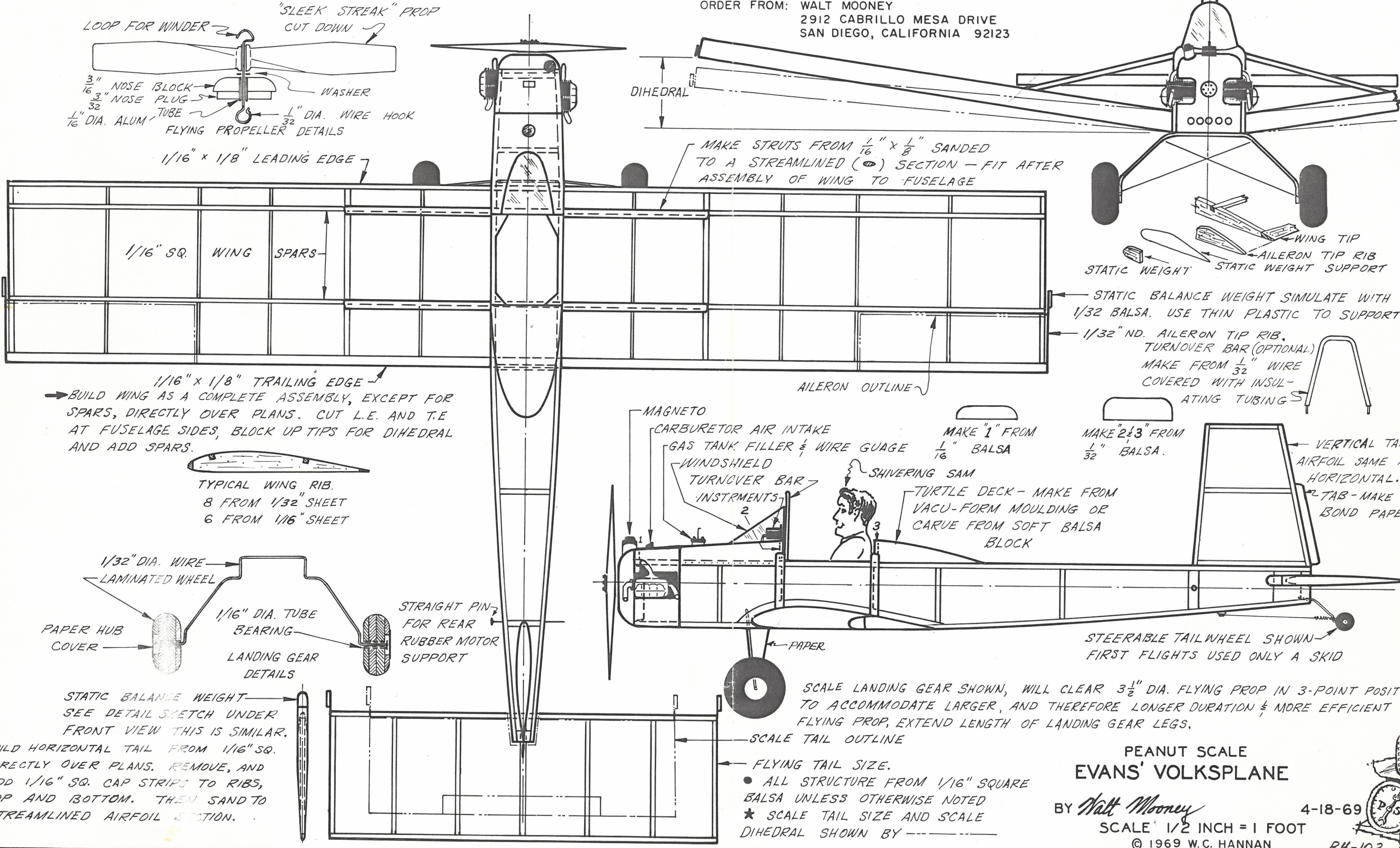


ONE IN A SERIES OF MODEL AEROPLANE PLANS & THINGS NOW AVAILABLE FROM W.C. HANNAN, GRAPHICS · P.O. BOX "A" ESCONDIDO, CALIFORNIA · 92025 U.S.A

NOTE: TO BUILD A VERY DETAILED VOLKSPLANE MODEL, YOU MAY OBTAIN A FINE INFORMATION PACKET DESCRIBING THE REAL AIRCRAFT FOR \$2.50.

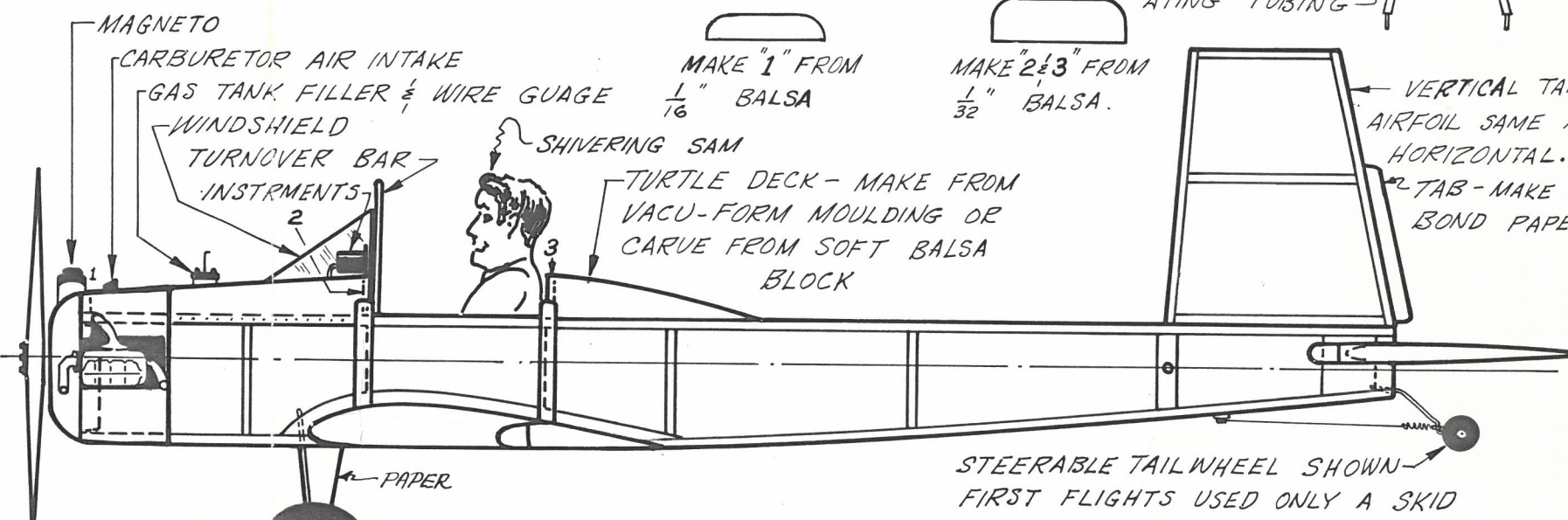
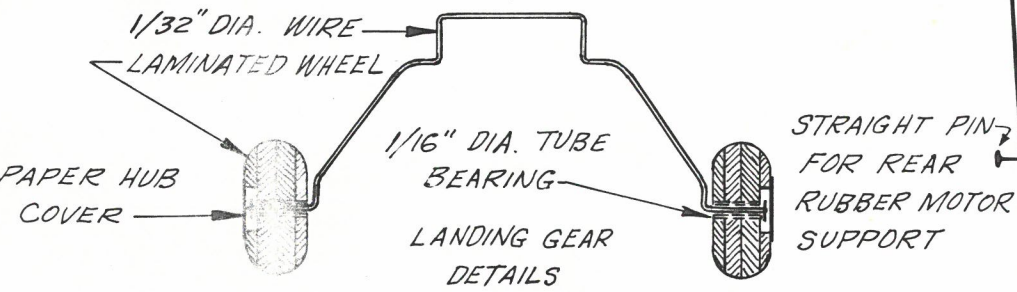
INCLUDED ARE: PHOTOS, A 3-VIEW, CUTAWAY DRAWING, SPECIFICATIONS, AND AN INBOARD PROFILE (WHICH SHOWS THE INSTRUMENT PANEL).

ORDER FROM: WALT MOONEY
2912 CABRILLO MESA DRIVE
SAN DIEGO, CALIFORNIA 92123



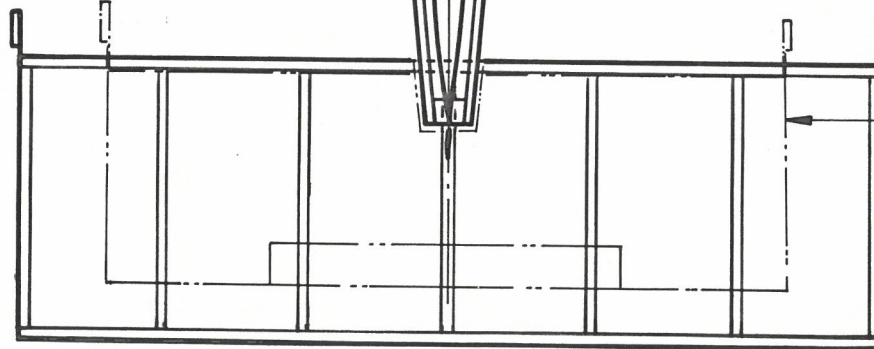
1/16" x 1/8" TRAILING EDGE

BUILD WING AS A COMPLETE ASSEMBLY, EXCEPT FOR SPARS, DIRECTLY OVER PLANS. CUT L.E. AND T.E AT FUSELAGE SIDES, BLOCK UP TIPS FOR DIHEDRAL AND ADD SPARS.



STATIC BALANCE WEIGHT - SEE DETAIL SKETCH UNDER FRONT VIEW THIS IS SIMILAR.

BUILD HORIZONTAL TAIL FROM 1/16" SQ. DIRECTLY OVER PLANS. REMOVE, AND ADD 1/16" SQ. CAP STRIPS TO RIBS, TOP AND BOTTOM. THEN SAND TO STREAMLINED AIRFOIL SECTION.



ALL STRUCTURE FROM 1/16" SQUARE Balsa UNLESS OTHERWISE NOTED

★ SCALE TAIL SIZE AND SCALE DIHEDRAL SHOWN BY -----

PEANUT SCALE
EVANS' VOLKSPLANE

BY *Walt Mooney*

SCALE 1/2 INCH = 1 FOOT

© 1969 W.C. HANNAN

4-18-69

BH-103