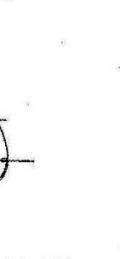
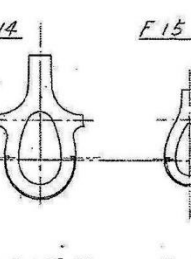
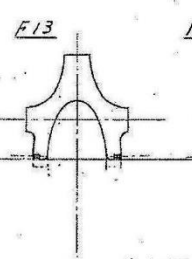
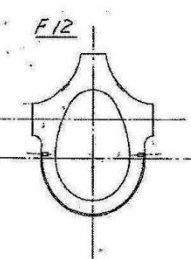
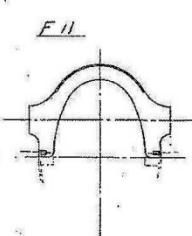
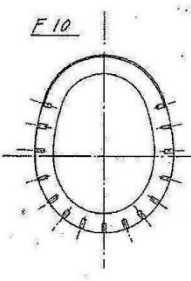
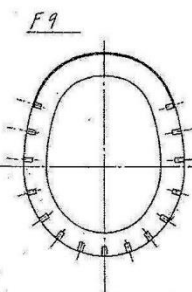
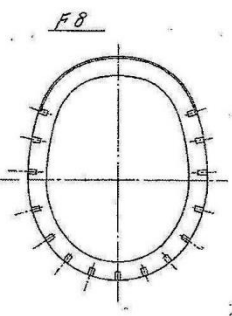
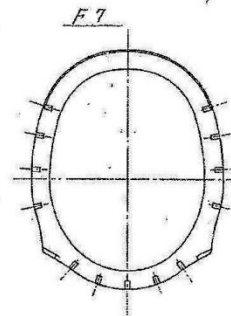
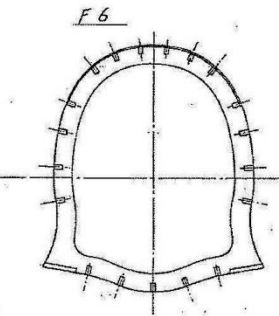
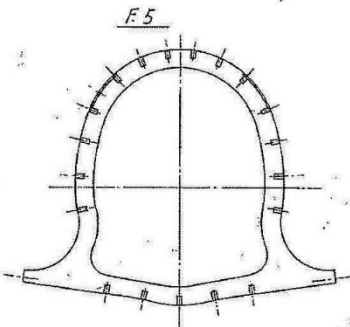
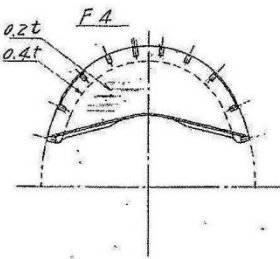
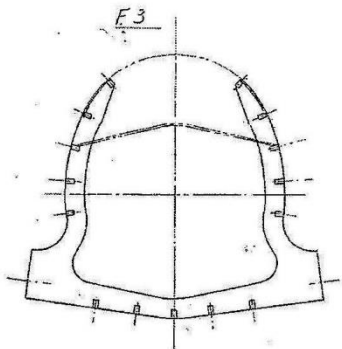
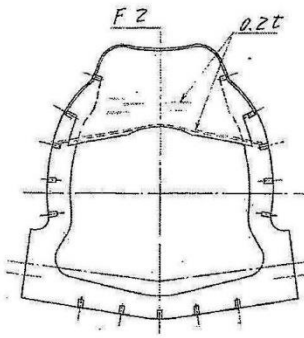
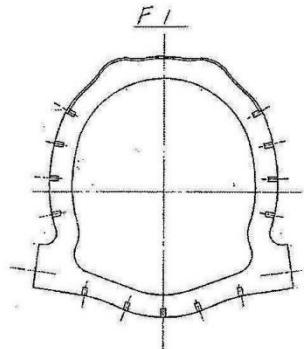
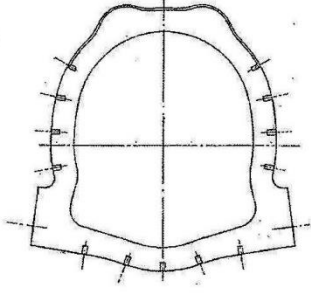


三二型 二二型 F1
五二型

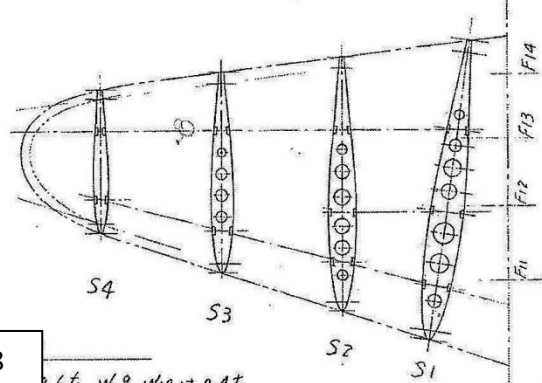
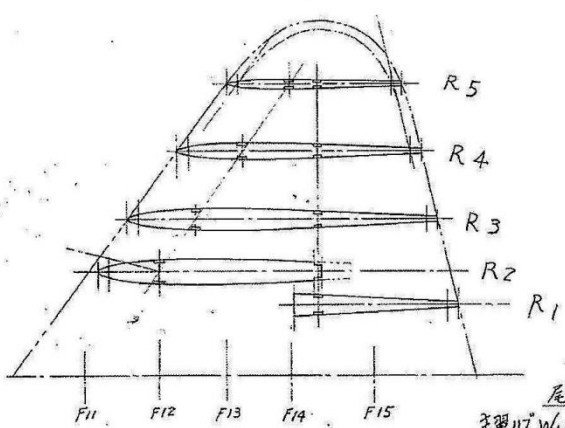
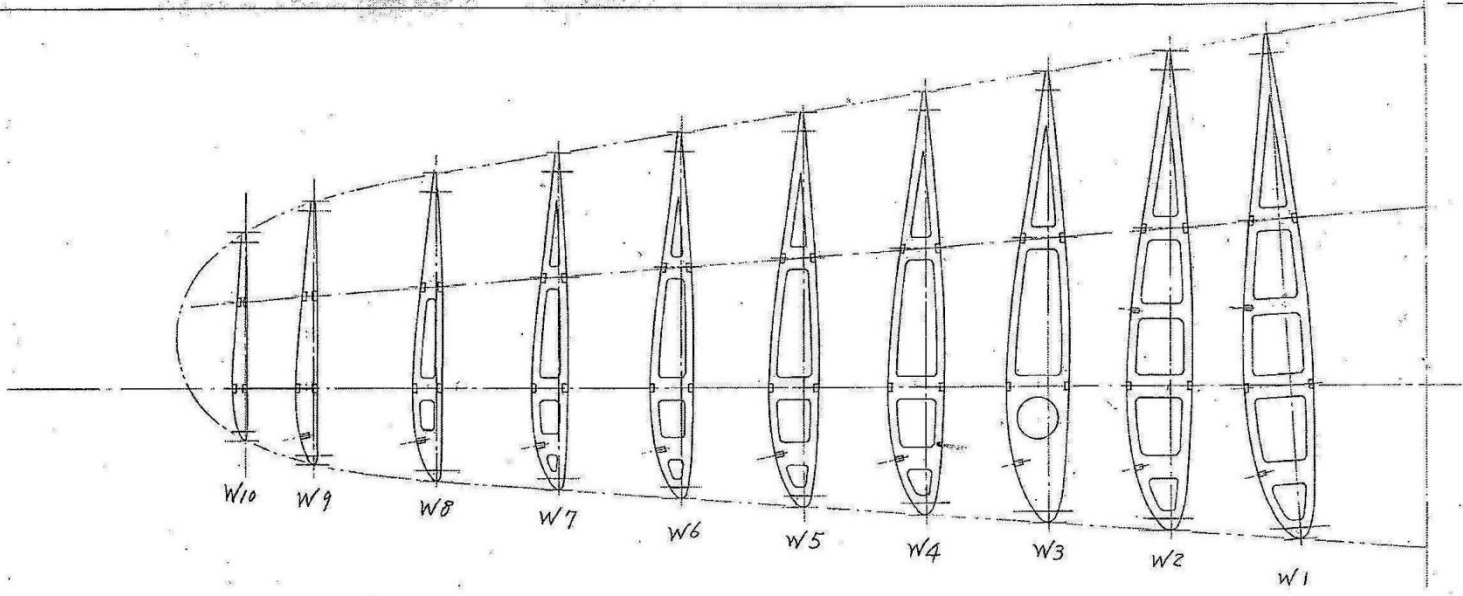


F1~F3, F5~F9は0.6t F10~F15は0.4t

零式艦上戦闘機二一型 (AGM2)

S = 1/36.4

2011.10.19 天田



尾翼リブ
主翼リブ W10は0.8t

2328

0.6t W9, W10は0.4t

零戦 21型
主尾翼リブ

S = 1/36.4

2011.10.9 天田
2012.2.27 天田