

dièdre 15 mm

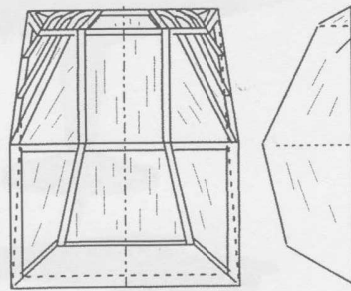
F.F.G. Berlin B-9

Moteurs : boucles de 1,4 à 1,6 mm long 200 mm 1200 à 1400 tours **Plus simple : avant moulé**

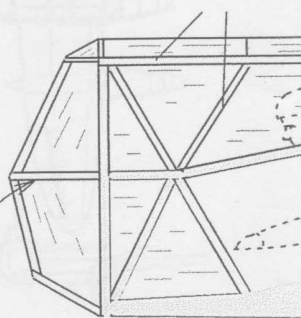
Hélices : 100 mm pas relatif 1,6

Poids complet avec moteurs longs : 11,5 g

LES CAHIERIS DU C.E.R.V.I.A.

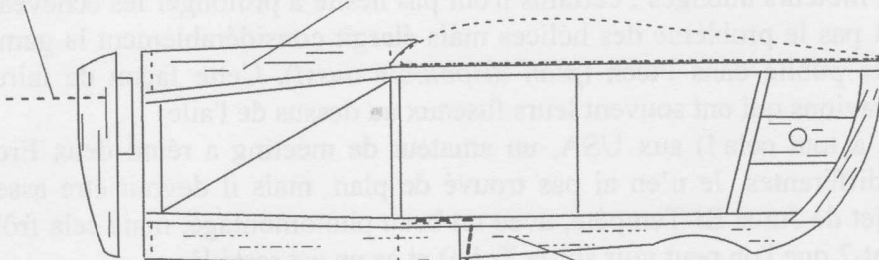


1 x 1 ou 0,8 x 0,8

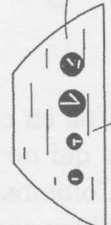


piqueur 3° à 5°

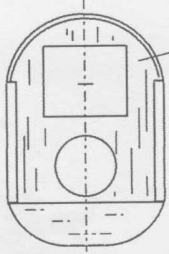
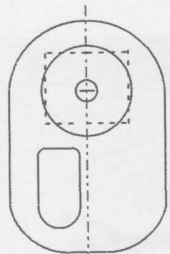
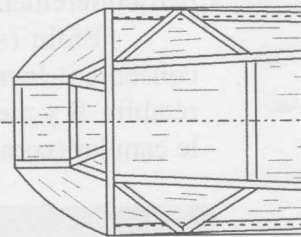
5/10



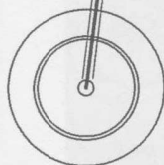
styro



10/10



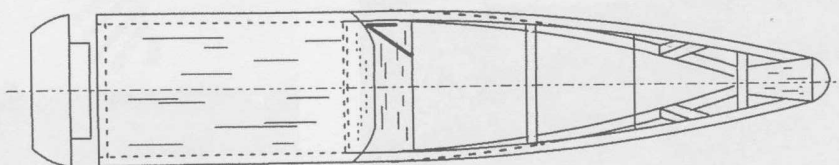
10/10



roue styro 21 mm

cap 5/10

replier vers l'avant



Ech

