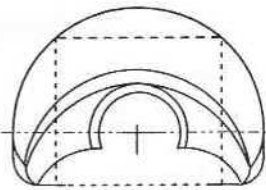
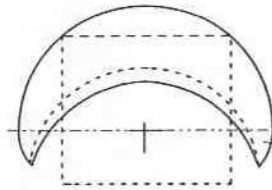
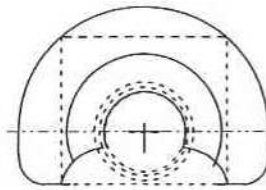


balsa 30/10

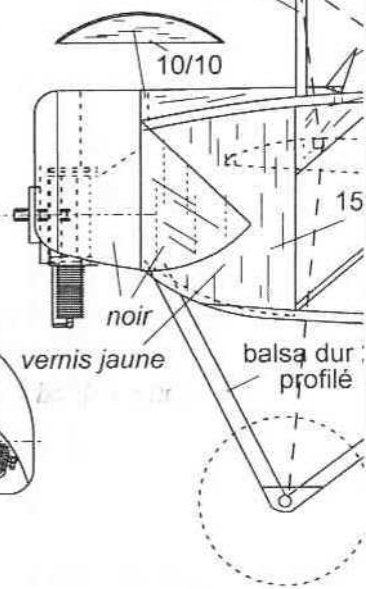


bloc vue face 1

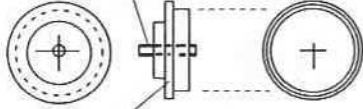


bloc vue arrière 2

1 x 1,5 balsa dur profilé

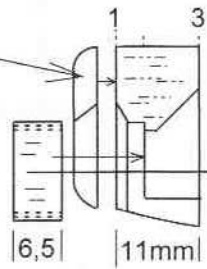


tube alu



ctp 10/10

2 x 5/10 + papier
roulé fil en long

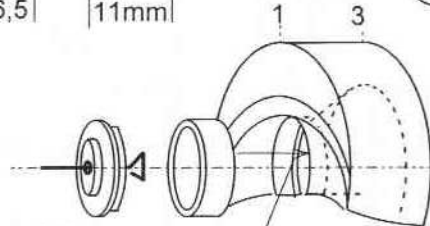


6,5 | 11mm



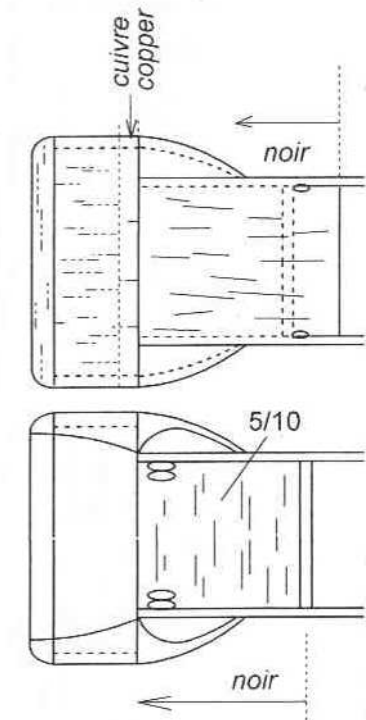
axe cap 7/10

coller

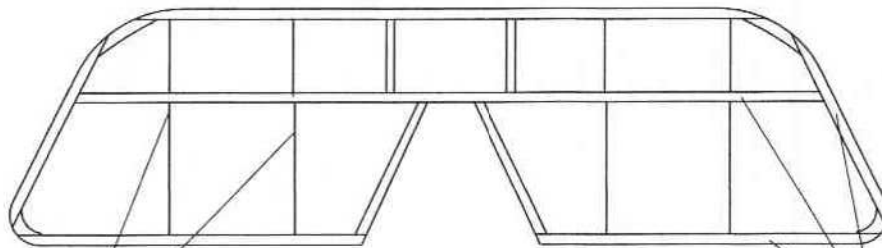


1913-2013
Centenaire de la traversée
de la Méditerranée
 Concours postal "Les Cahiers du CERVIA"

Morane - Saulnier type H

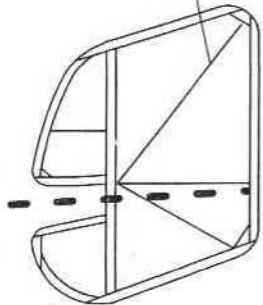


Les cahiers du C.E.R.V.I.A.



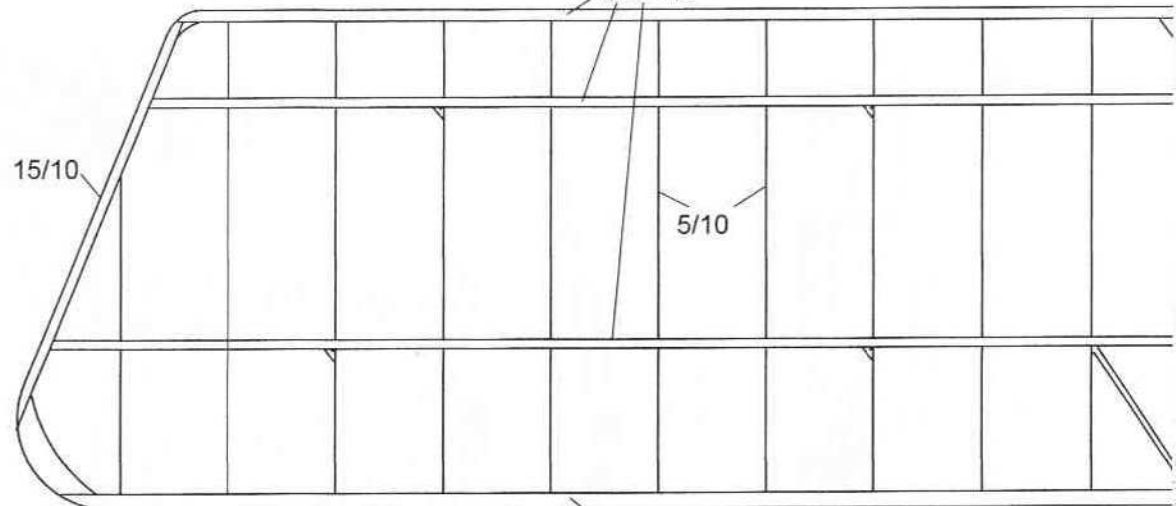
0,5 x 1,5

1,5 x 1,5



15/10

5/10



1 x 2