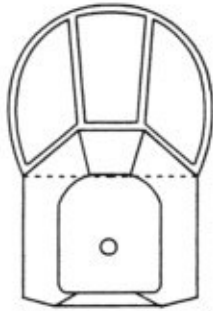
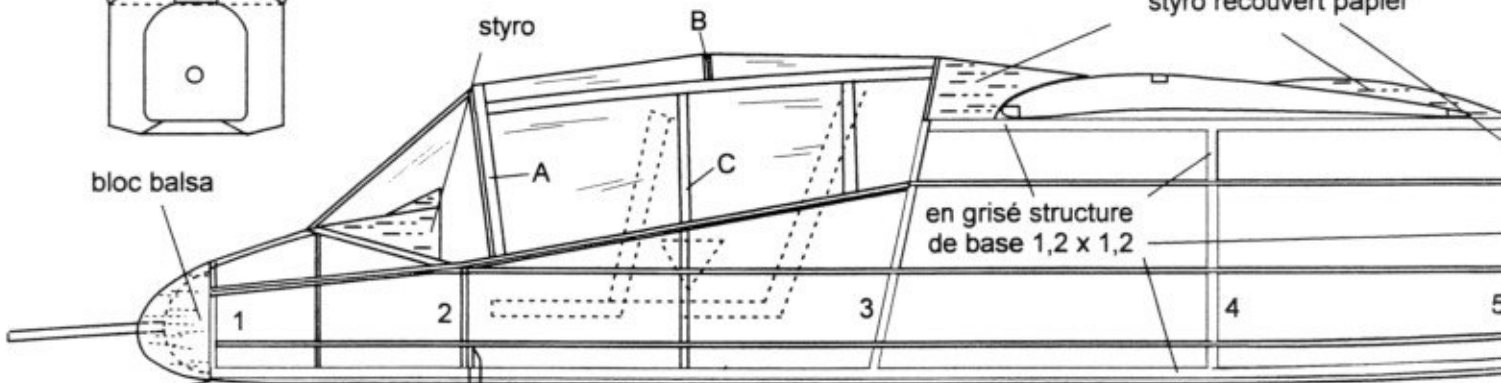


cale de vrillage 1,5 mm

North American **Bronco**



bloc balsa



styro recouvert papier

en grisé structure de base 1,2 x 1,2

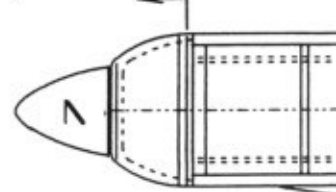
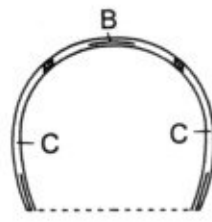
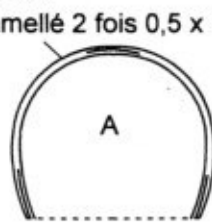
habillage papier

jambe bambou

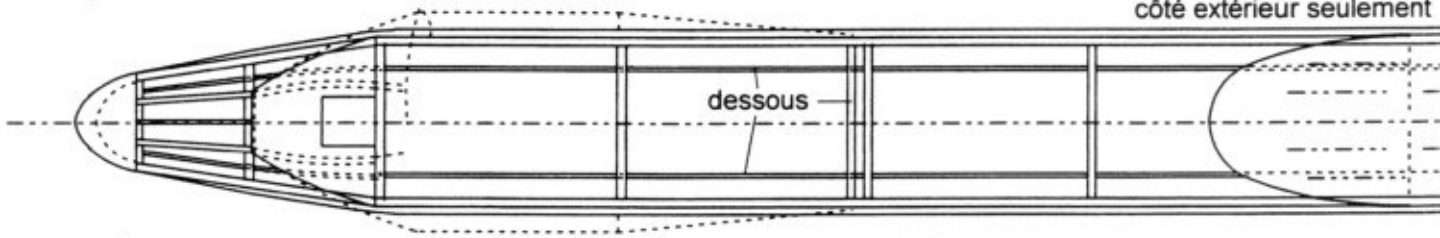
lamellé 2 fois 0,5 x 1,5

fourche souple
2 éléments d et g
cap 3/10

roue styro 18 mm



échappement papier ou styro
côté extérieur seulement



dessous



vue avant

réglage piqueur

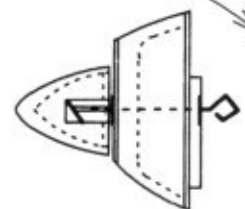
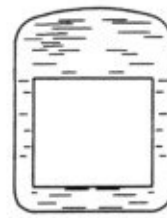
palier laiton
plaque ctp 5/10
coulissante

vis

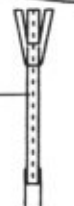


vue arrière

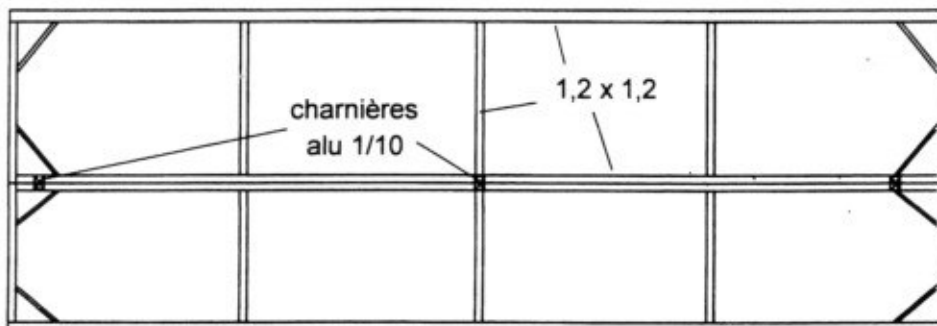
nez



cap 5/10
habillé de tube
plastique+papier



vue de face



charnières
alu 1/10

1,2 x 1,2

Les notices de

C.E.R.V.I.A.