

LES CAHIERS DU C.E.R.V.I.A.

Pare-brise Av

Ma

C2: Clp 4/10°

7 bossages balsa tendre

Balsa tendre évidé 12/10°

35

12x12

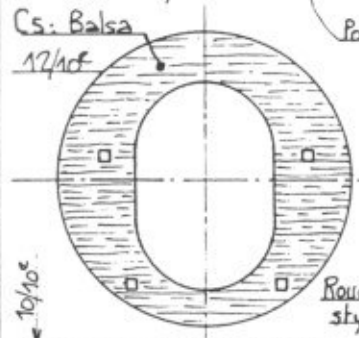
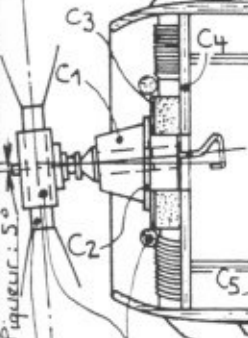
Coffrage 4/10°

1x1

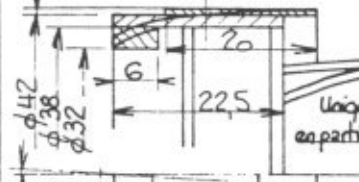


C11 Lisses 0,8x0,8

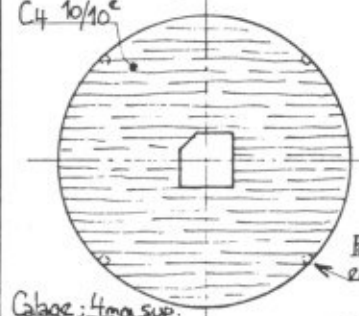
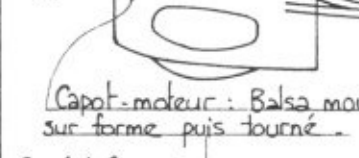
C12



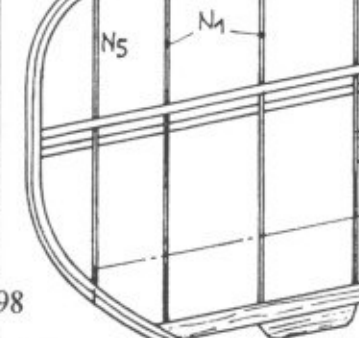
C5: Balsa 12/10°



Uniquement en partie intérieure



Capot-moteur: Balsa mouillé, roulé sur forme puis tourné



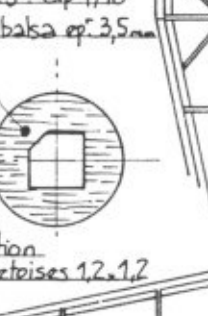
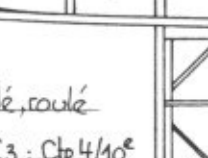
Calage: 45mm sup, 85mm inf



Garde-boue thermofomé. Supprimé avant collage du nez



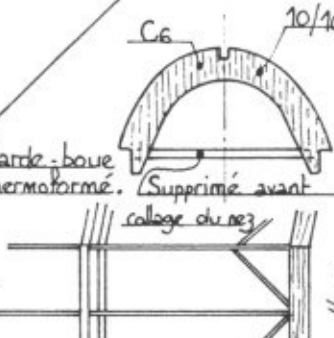
Uniquement en partie intérieure



Position entretoises 1,2x1,2



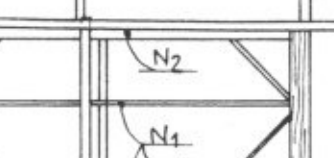
Calage: 45mm sup, 85mm inf



C6 10/10°



C7 10/10°



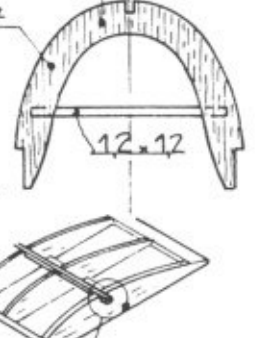
C8 10/10°



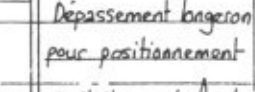
C9 6/10° + tableau de bord papier



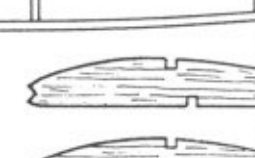
C10 12/10°



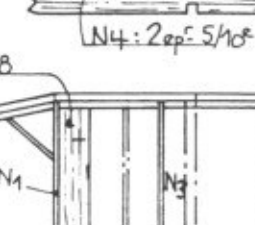
C7 10/10°



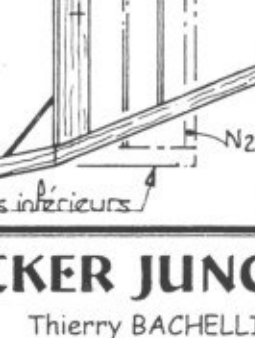
C8 10/10°



C9 6/10° + tableau de bord papier



C10 12/10°



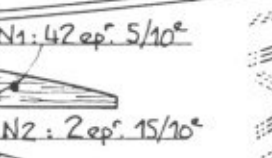
C11 Lisses 0,8x0,8



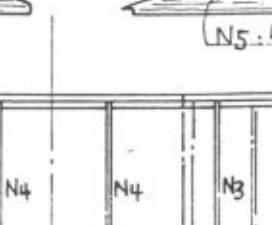
C8 10/10°



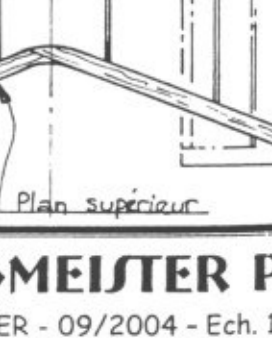
C9 6/10° + tableau de bord papier



C10 12/10°



C11 Lisses 0,8x0,8



C12

Structure générale: baguettes 1,2x1,2

Arête ventrale 10/10°

Dépassement bageon pour positionnement de l'aile sur le fuselage

N1: 42 ep. 5/10°

N2: 2 ep. 15/10°

N3: 2 ep. 5/10°

N4: 2 ep. 5/10°

N5: 4 ep. 5/10°

Détail

Calage: 4mm sup, 8mm inf

Plans inférieurs

Plan supérieur

BUCKER JUNGMEISTER PEAK

Thierry BACHELLIER - 09/2004 - Ech. 1/20°

Merci à Roger AIME et André PETIT pour leur aide amicale.