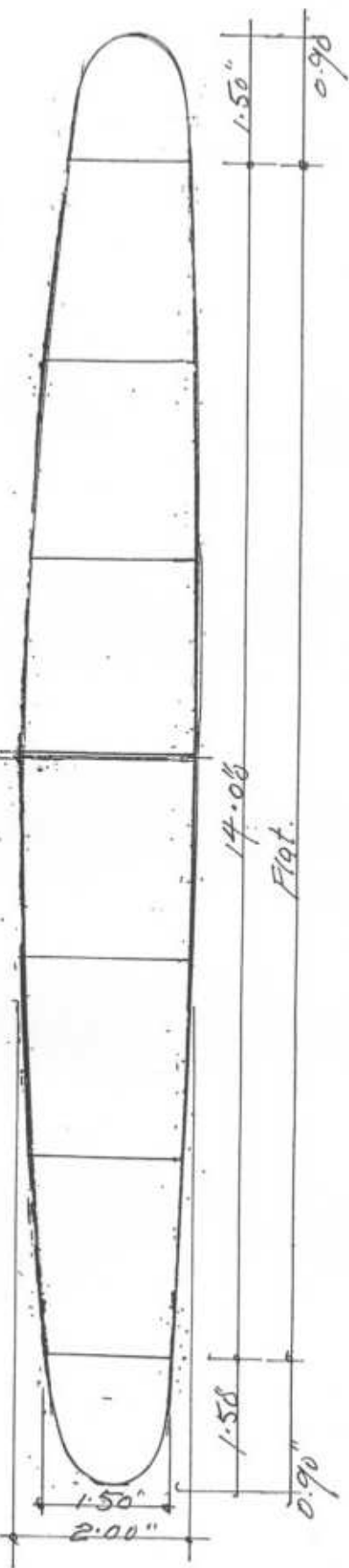
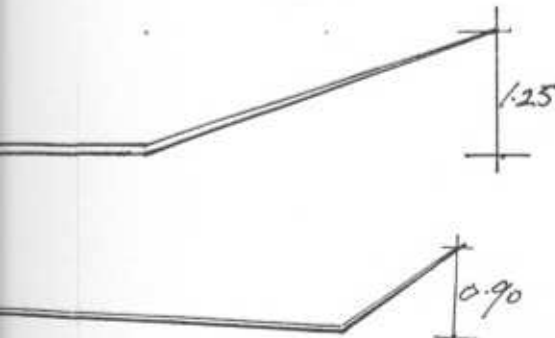


'NEARLY B' an FIL by Geoffrey Lefever

This model is named 'NEARLY B' because it nearly won three Internationals in 2002. Orleans, Bordeaux and the Cargolift Best performances
 Bordeaux Cat. 111 20.05 and 19.19 total 39.24 2nd place
 Cargolift Cat 1V 26.41 and 26.40 total 53.21 3rd place



Trim

- Wing - Centre section no warps
Washin to L.H panel with stick torsional deflection.
- T.P. Slight washin to L.H panel and Tilt.
- Thrustline 3° left and 2° to 3° down.

Cargolift motor

March 2002 Tan 2. 16" loop. 1.076 gm
 2860 > 2760 turns. 40 > 38 gm.cm.
 Ave. r.p.m. 103

LES CAMERES DV C.E.R.V.L.A.

box from 0.010. 0.90" long.
 jap tissue binding



0.013" rear hook.

Nylon bristle to retain motor.

Jap. tissue tubes on TP.

