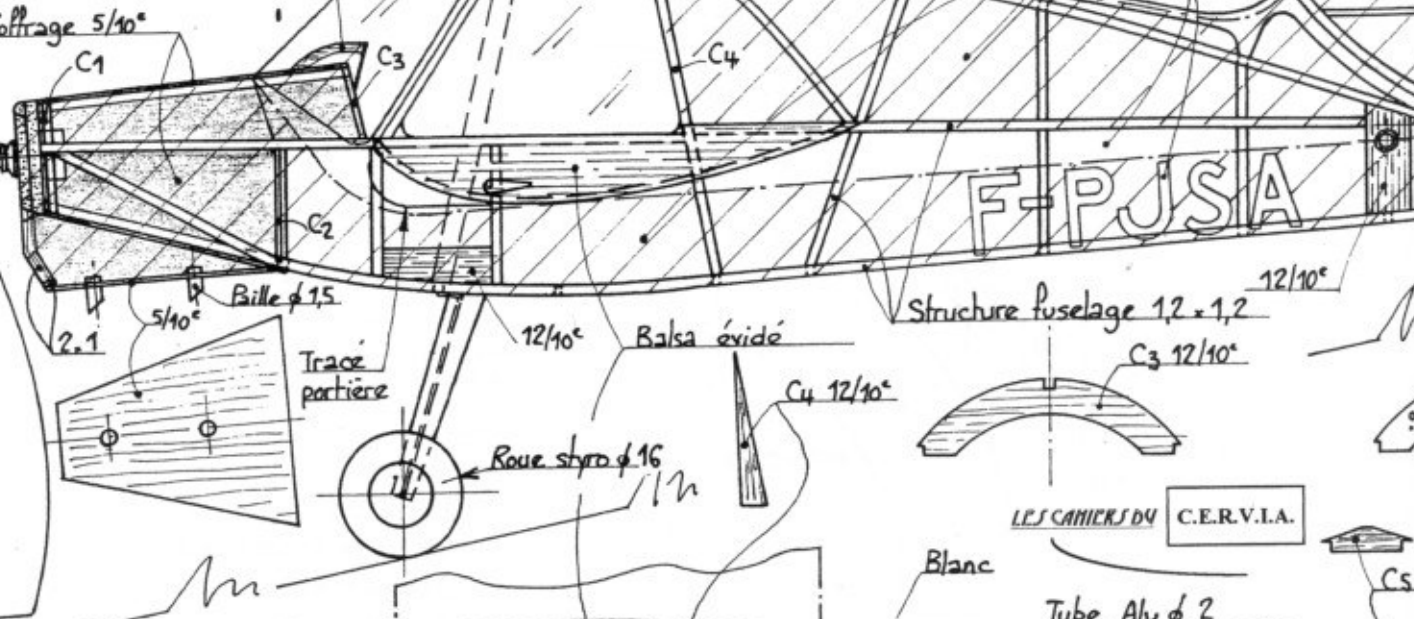


C1: Ctp hêtre 4/10° + balsa 10/10°



2 x 15/10° à contre-fil  
Cône balsa tourné  
Balsa tendre évidé



Tracé Noir  
Blanc  
Diedre 10°

Orange  
Blanc

F-PJSA

Structure Fuselage 1,2 x 1,2

2.1  
5/10°

Bille φ 15  
Trace portière

Roue styro φ 16

Balsa évidé  
C3 12/10°

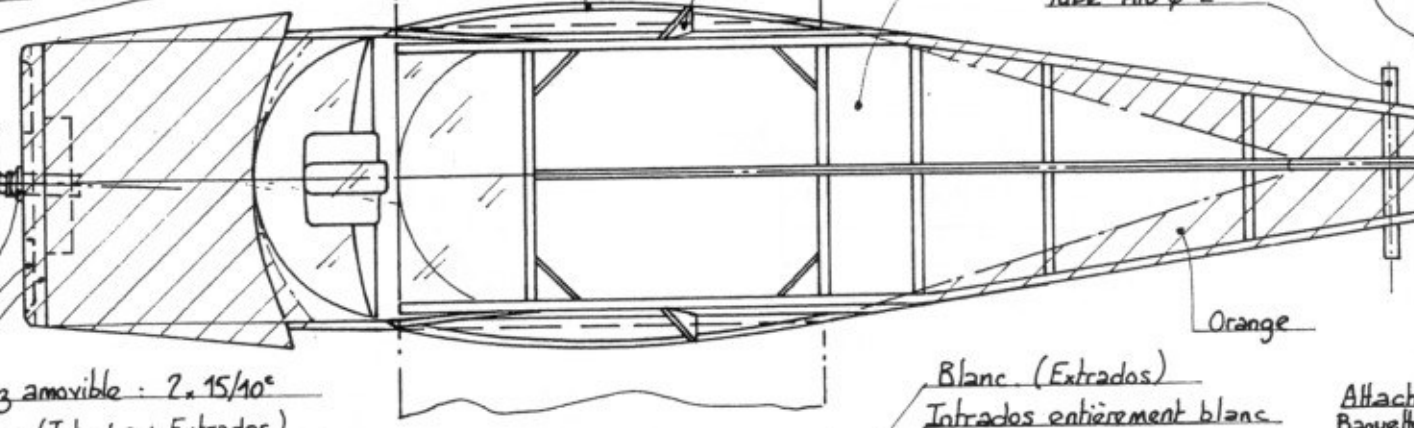
C4 12/10°

LES CAMIERS DU C.E.R.V.I.A.

Blanc

Tube Alu φ 2

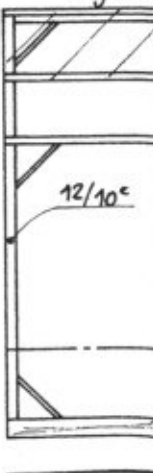
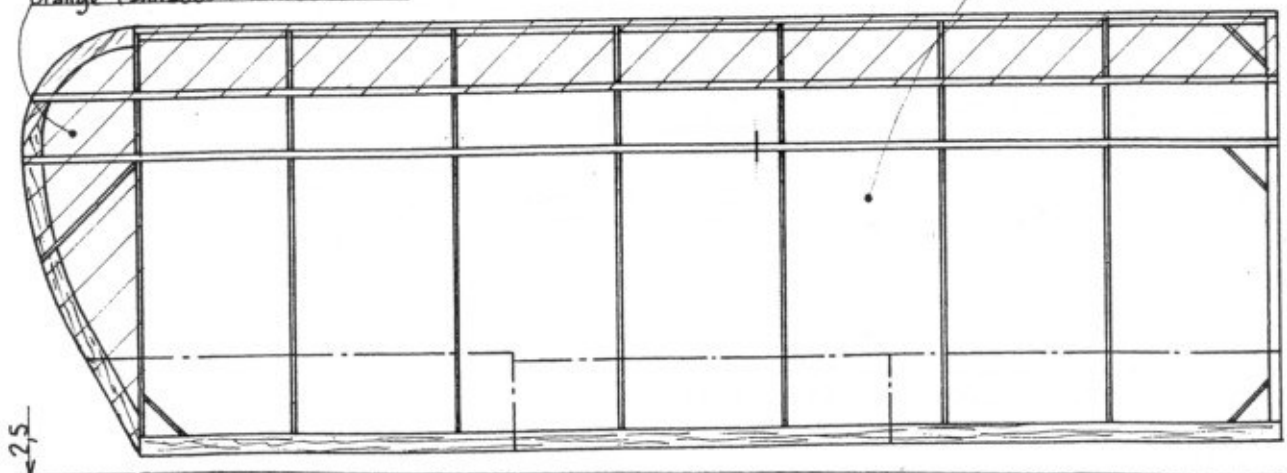
3° à droite  
Palier PECK



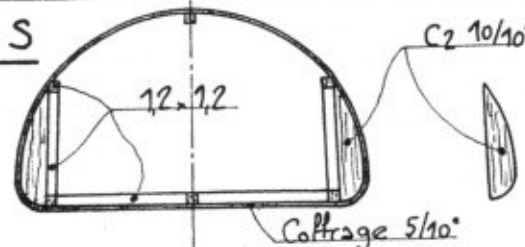
Nez amovible : 2 x 15/10°  
orange (Intrados + Extrados)

Blanc (Extrados)  
Intrados entièrement blanc

Attache  
Bague



Section S



C2 10/10°

Orange

Coffrage 5/10°

Gris satiné  
Noir satiné (Extrados)

Bambou

2 x 10/10° contre-collé  
mouillé sur forme φ 100