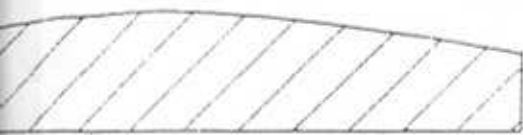
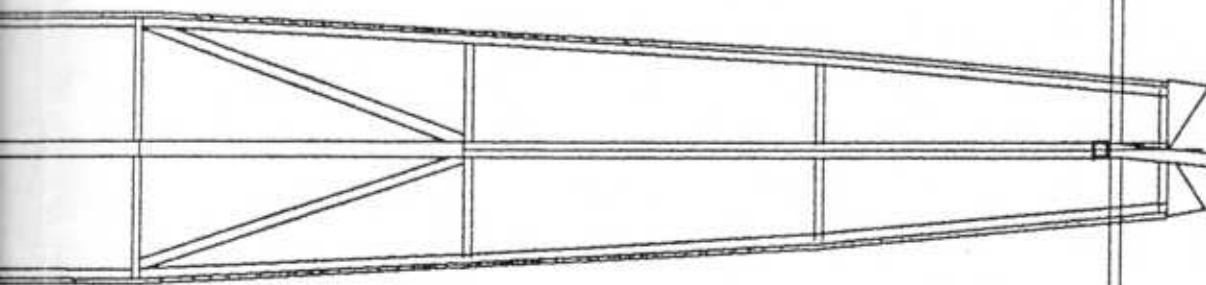
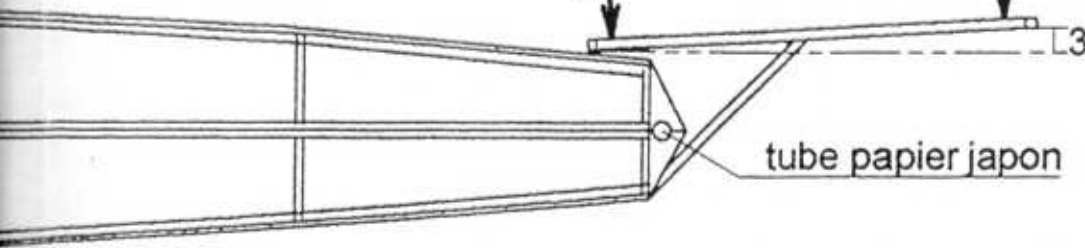


100

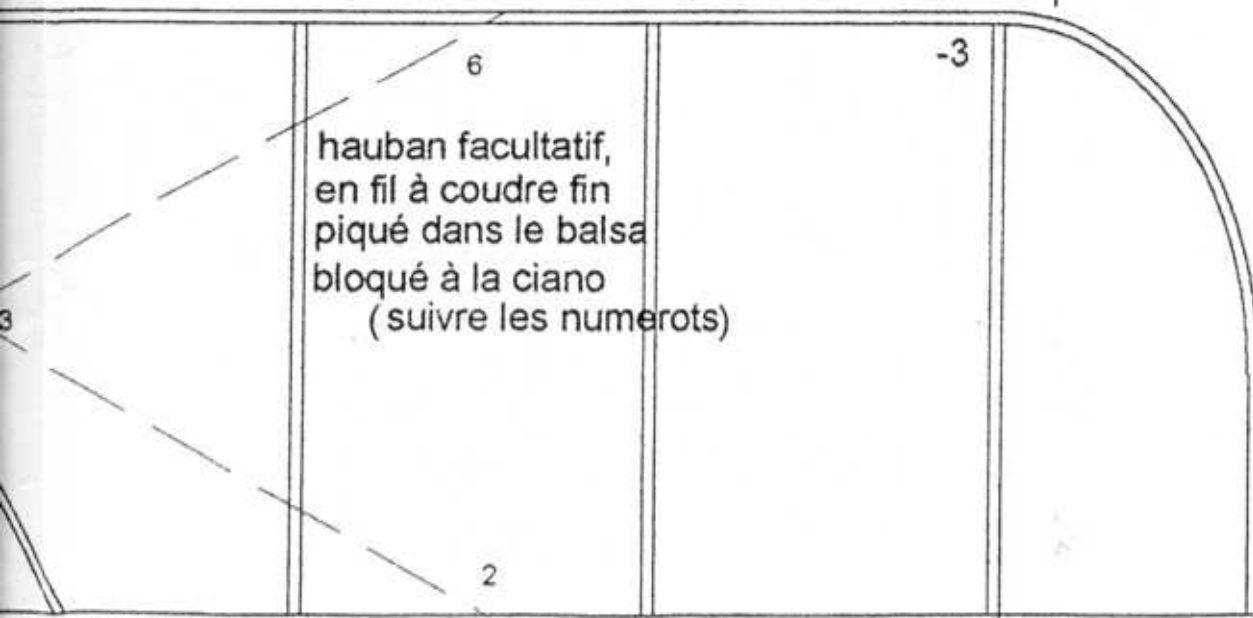
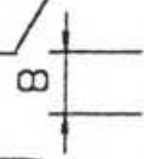
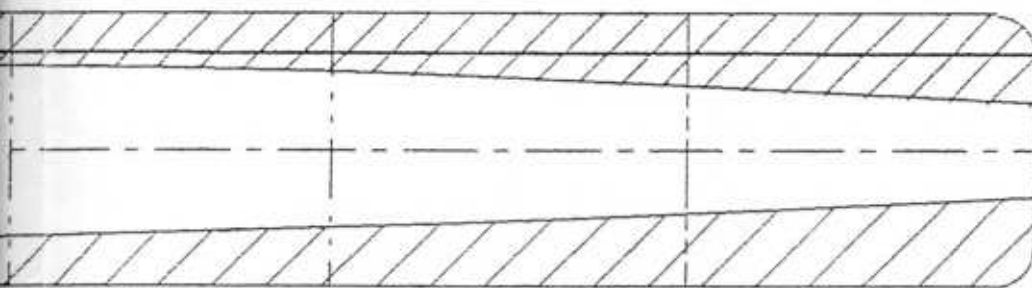
*Saintpierre*



tube papier japon



longeron entre A et B, monter la cabane



hauban facultatif,  
en fil à coudre fin  
piqué dans le balsa  
bloqué à la ciano  
(suivre les numerots)

- balsa densité 0,1
- fuselage 1x1
- entoilé papier japon
- nez 30/10
- butée mine Ø 2
- stab. 1x1
- ailes 2x1 → 1x1
- nervures 1.5x1
- sur champ
- entoilé polypro. fin



*Saintpierre*

J.-M. Fournier 12/99