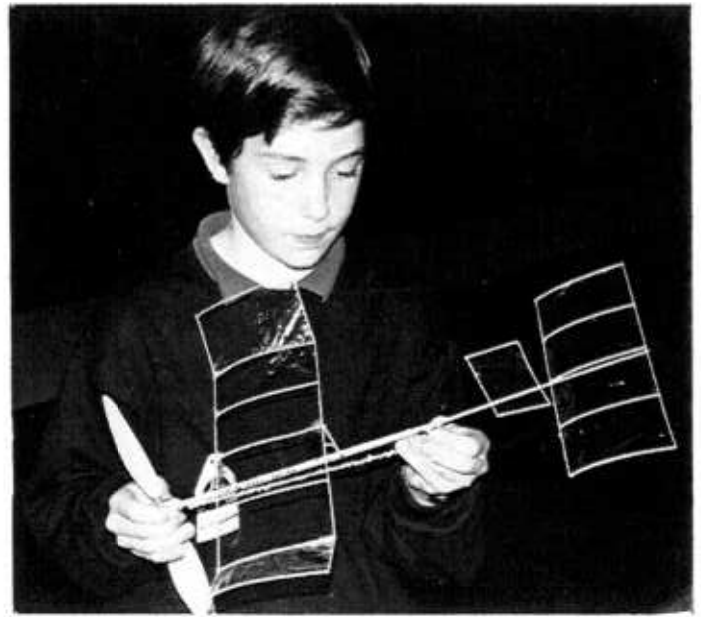
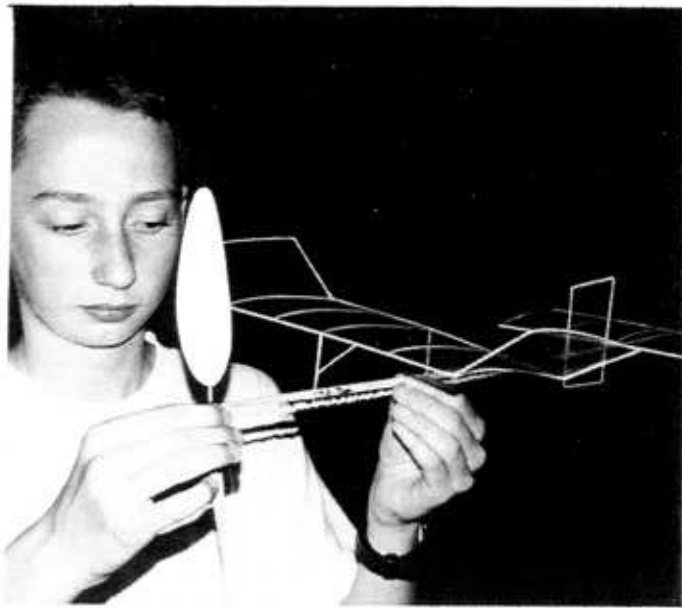




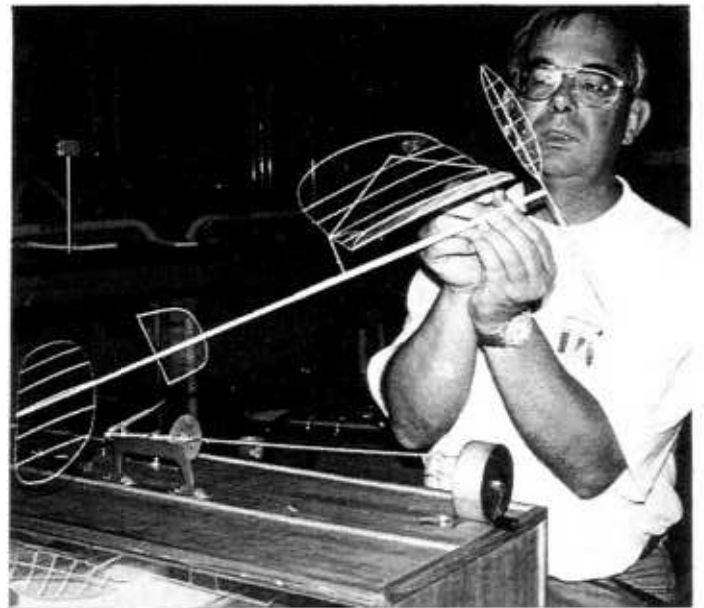
B. BAILEY ... intouchable en F1L.



X. DUBOIS de la SABLONIERE (M 35 Cadet)

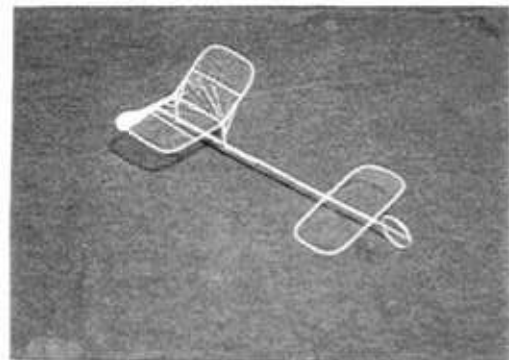
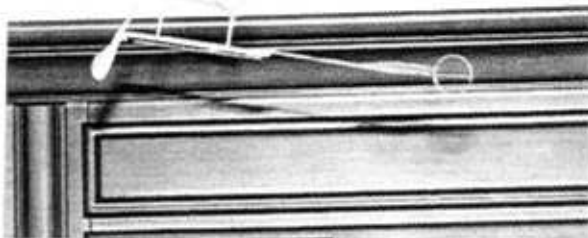


P.A. DUMERY (M 35 Cadet)



R. CHAMPION, 1er en F1D

Vers l'infiniment petit ?



*Super mini-modèle d'A. KLINCK :
Envergure 98 m/m, Masse 0,15 g
Vols supérieurs à la minute.*