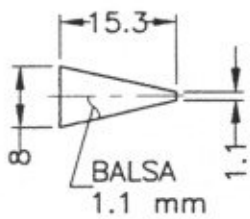
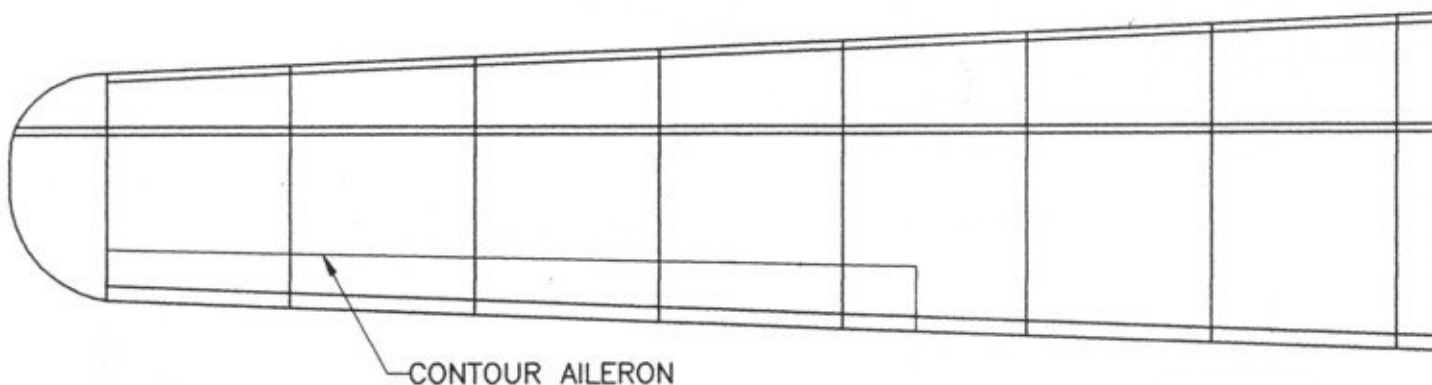
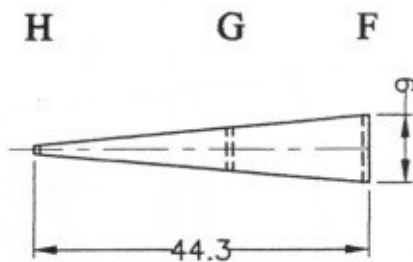


DETAIL 2



VUE K



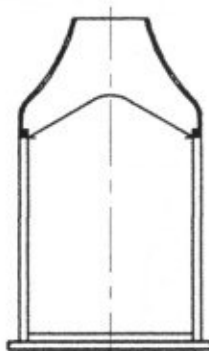
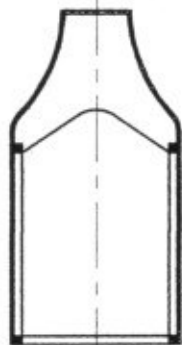
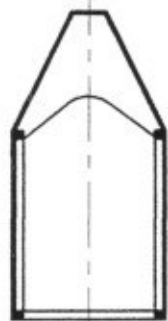
LES CAHIERS DU C.E.R.V.L.A.

A

B

C

D

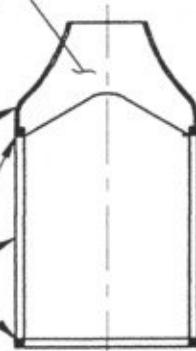


E

0.8 mm  
BALSA (TYP.)

COFFRAGE  
BALSA 0.4mm

1.1x1.1 mm  
BALSA



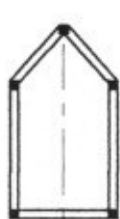
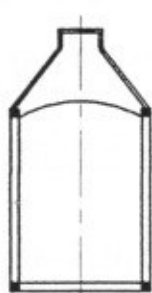
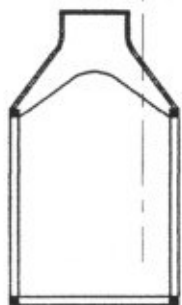
VOIR DETAIL 2

F

G

H

I



J



BALSA 1 mm  
mis en forme  
sur un cylindre  
de  $\phi 80$  et avec  
une inclinaison de  $15^\circ$



BAMBOU  $\phi 2$  mm