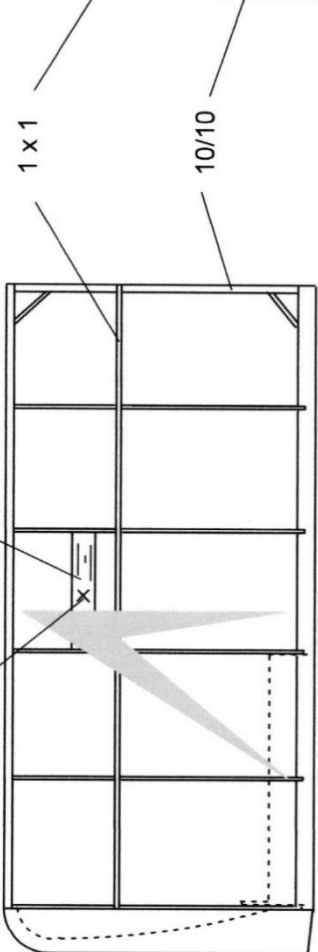


bloc balsa allégé

1,2 x 1,2

2 x 1



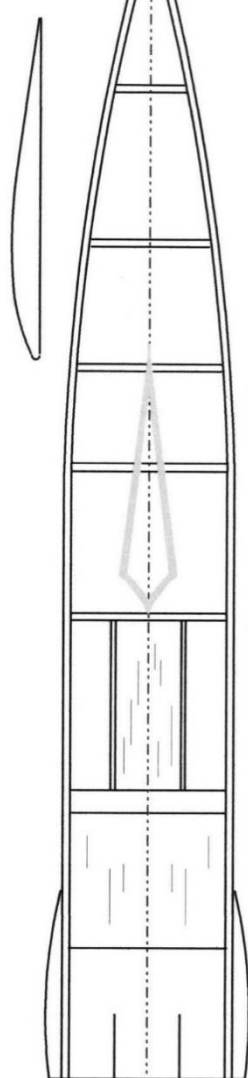
8/10 dessous

mat

1 x 1

10/10

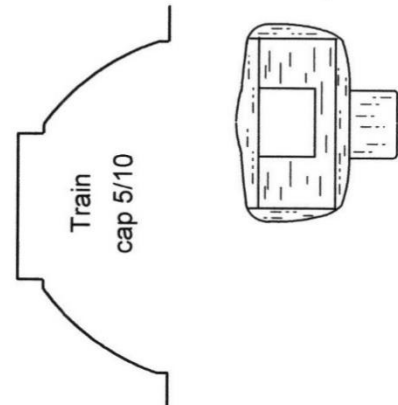
dièdre 4,5 à 5 mm
en bout



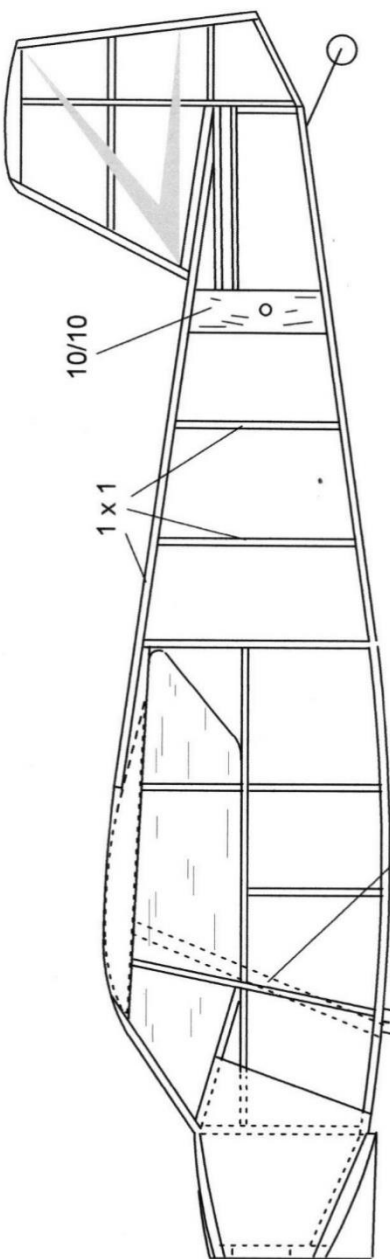
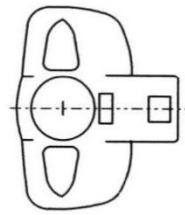
1 x 1

0,5 x 1

Scott OL' IRONSIDES



Train
cap 5/10



10/10

1 x 1

baguettes 1,2 x 1,2 ou 1 x 1 dur

mat
cap 5/10 + papier

carénage et fausse roue
balsa ou styro

Alain Parmentier 10 / 2020